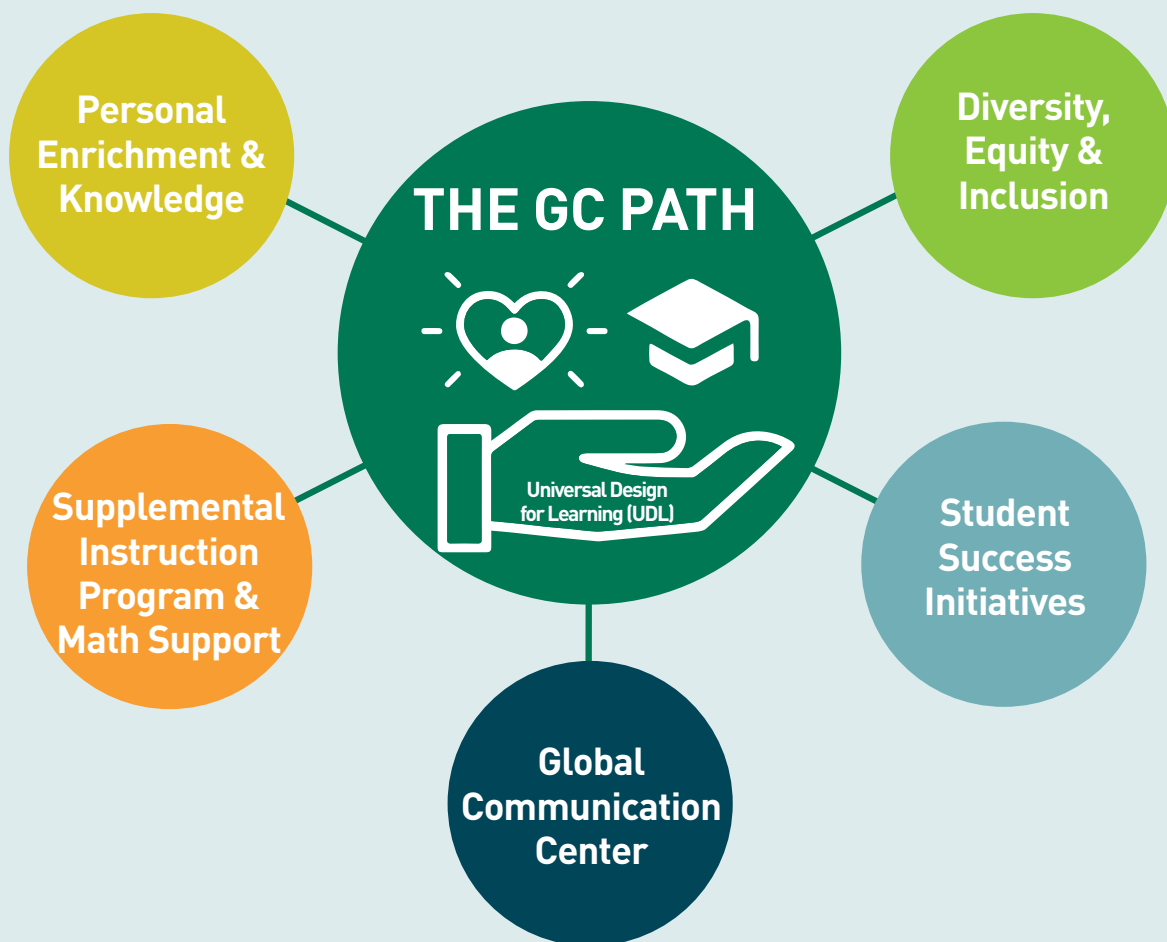


THE GC PATH

Student Success Opportunities

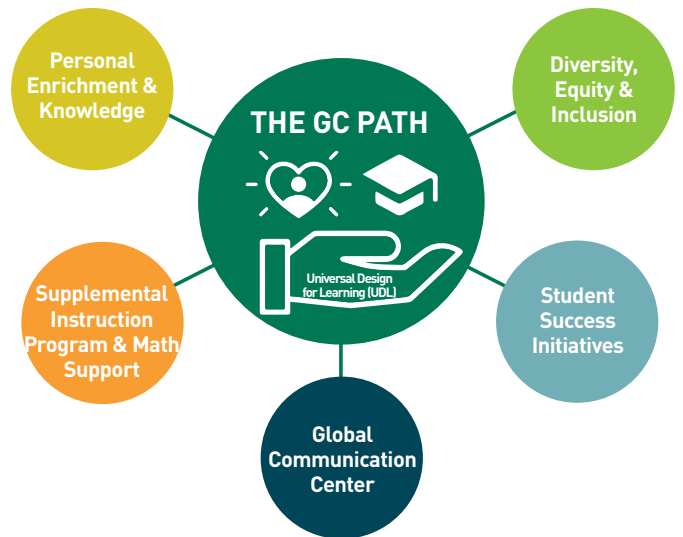


YOUR PATH FORWARD
GREENSBORO COLLEGE



A STUDENT-CENTERED APPROACH FOR SUCCESS

At Greensboro College,
we are committed to a personalized
learning experience, through
Universal Design for Learning
(UDL) and we are invested in the
success of our students.



Diversity, Equity, & Inclusion (DEI)

The Office of Diversity, Equity & Inclusion provides advocacy, programming, and services to foster an environment where everyone feels welcome. Coupled with our Sankofa Center, we are rooted in the belief that everyone has a place in our community. The Sankofa Center is located on the garden level of the Student Center. Visit www.greensboro.edu/diversity

Student Success Initiatives

The student success initiatives are a convoy of opportunities for students to be connected to academic resources and find engaging ways to grow academically and towards overall success. Dynamic and engaging academic success skills sessions are offered to assist students in mastering time management, fostering a growth mindset, promoting effective communication with professors, and more. We recognize the importance of family engagement in students' academic journeys, and we encourage collaboration between families and our teams to create a supportive network. With a host of other collaborative student success initiatives in partnership with various campus offices, our goal is to help students discover their strengths, through meaningful engagement and achieve success both in the classroom and in life.

Personal Enrichment and Knowledge (PEAK)

The PEAK (Personal Enrichment and Knowledge) centralizes various services that support students' academic growth. We get to know students and their unique needs and learning styles, and our goal is to help students stretch themselves academically. Our services include academic advising, study skills/time-management coaching, investigating different majors, arranging classroom accommodations, career counseling, and providing tutors for various classes. PEAK is located on the third floor of Main. Visit www.greensboro.edu/academics/academic-support

Supplemental Instruction Program & Math Support

The Supplemental Instruction Program and Mathematics Supports have tailored services that provide additional aid for any student enrolled in supported courses. Participation allows students to form an individualized strategy for success and learn to effectively communicate academic needs with peers, student leaders, and faculty members. Visit www.greensboro.edu/sip

Global Communication Center (GCC)

The First Citizens Bank Global Communication Center (GCC), located on the garden level of J.A. Jones Library, provides 21st-century media, communication services, resources, and programs to the Greensboro College community. The GCC provides free, professional consultants to assist students with written and oral communication, podcasting, graphic design, photography, and video projects. The GCC's video and podcasting studios can be used for various media projects with in-house equipment, editing software, and accessories. Multiple programs at the GCC are available throughout the year to encourage students to explore multimodal communication techniques. Visit www.greensboro.edu/gcc

